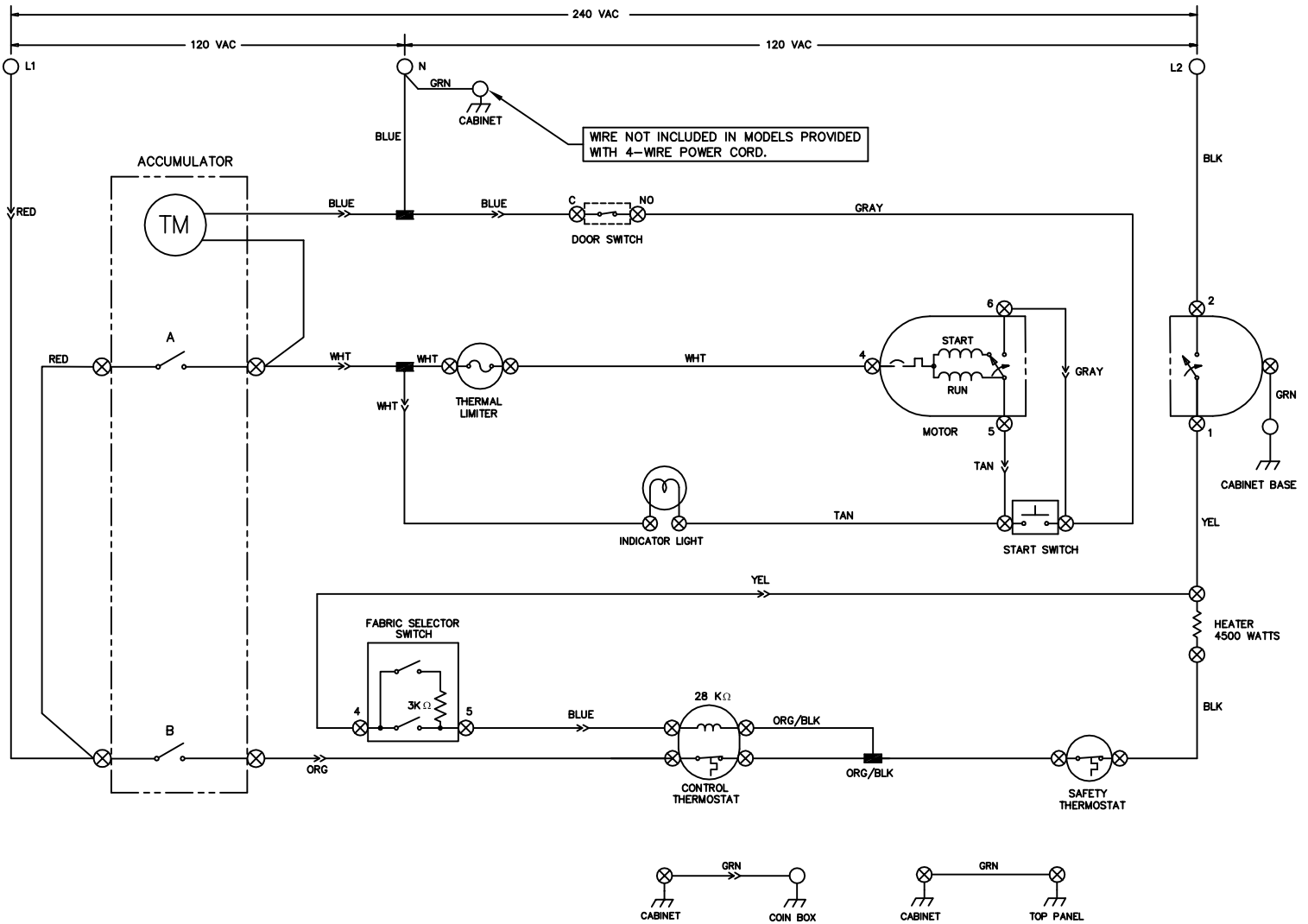


!CAUTION: DISCONNECT ELECTRIC CURRENT BEFORE SERVICING. LABEL ALL WIRES PRIOR TO DISCONNECTION WHEN SERVICING CONTROLS. WIRING ERRORS CAN CAUSE IMPROPER AND DANGEROUS OPERATION. VERIFY PROPER OPERATION AFTER SERVICING.

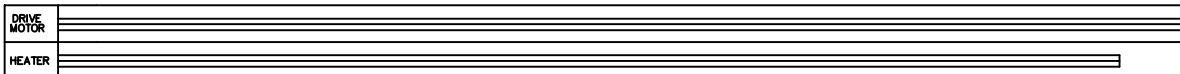


| WIRING CODES | |
|--------------|----------------------------|
| ⊗ | QUICK DISCONNECT TERMINAL |
| + | CONNECTION |
| + | NO CONNECTION |
| ⊗ | MOTOR SWITCH |
| — | SPLICE |
| — | MOTOR PROTECTOR |
| ⊕ | CHASSIS (CABINET) GROUND |
| ○ | SCREW TERMINAL |
| → | HARNESS CONNECTOR TERMINAL |
| ⊗ | INSULATED TERMINAL |

| FABRIC SELECTOR SWITCH | |
|------------------------|--------------|
| FUNCTION | RESISTANCE Ω |
| HIGH | ∞ |
| MEDIUM | 3K ±5% |
| LOW | 10 MAX |

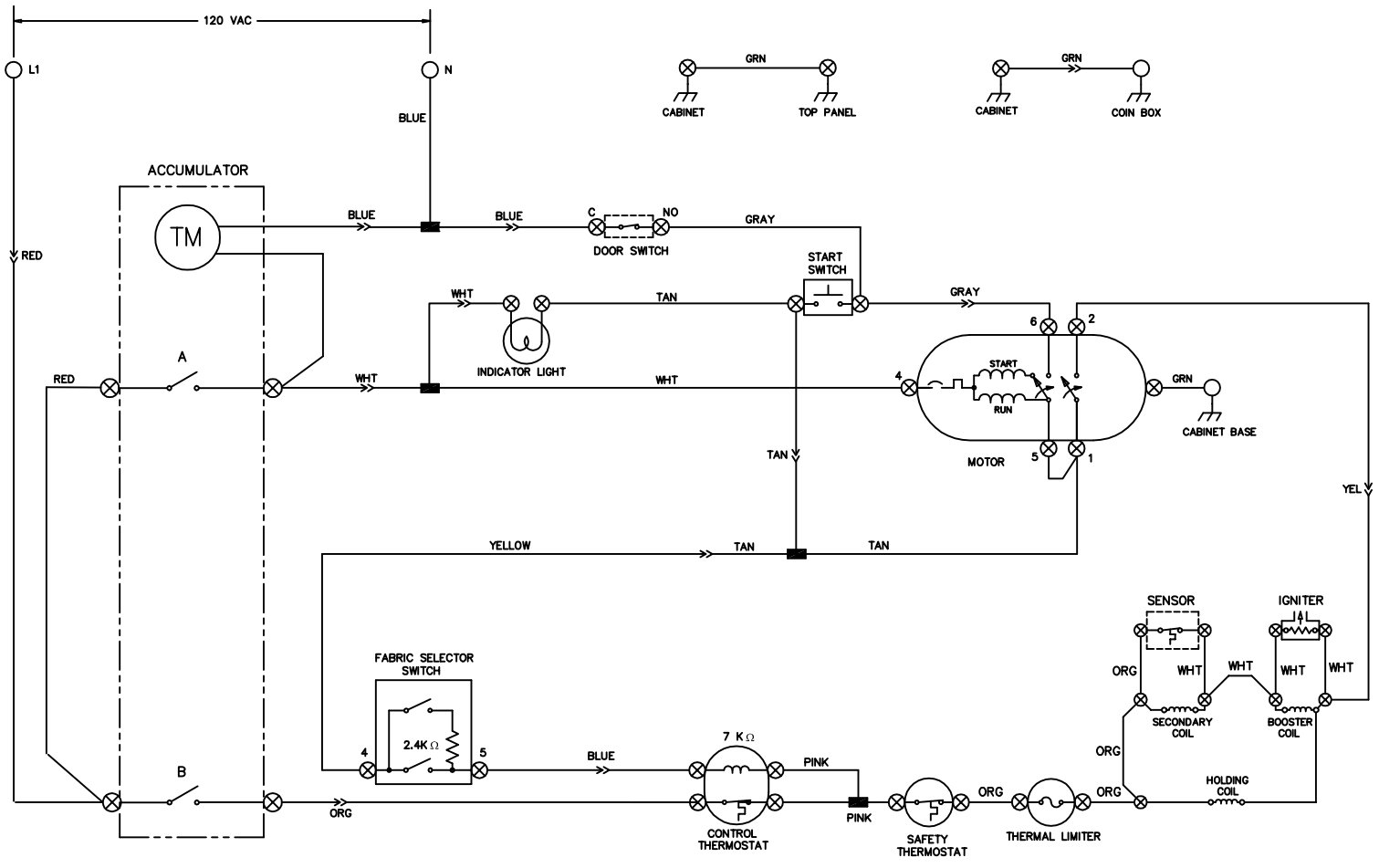
- NOTES:
1. ALL WIRING MUST CONFORM TO LOCAL ELECTRICAL CODES.
 2. CONNECT DRYER TO A 30 AMP INDIVIDUAL BRANCH CIRCUIT.
 3. SHOWN IN OFF POSITION, DOOR SWITCH CLOSED, MOTOR AT REST, THERMOSTAT CLOSED AND FABRIC SELECTOR SWITCH AT REGULAR.

1 ACCUMULATION



E

!CAUTION: DISCONNECT ELECTRIC CURRENT BEFORE SERVICING. LABEL ALL WIRES PRIOR TO DISCONNECTION WHEN SERVICING CONTROLS. WIRING ERRORS CAN CAUSE IMPROPER AND DANGEROUS OPERATION. VERIFY PROPER OPERATION AFTER SERVICING.



| WIRING CODES | |
|--------------|---------------------------|
| ⊗ | QUICK DISCONNECT TERMINAL |
| + | CONNECTION |
| + | NO CONNECTION |
| ↔ | MOTOR SWITCH |
| — | SPLICE |
| — | MOTOR PROTECTOR |
| ⏏ | CHASSIS (CABINET) GROUND |
| ○ | SCREW TERMINAL |
| ↔ | HARNES CONNECTOR TERMINAL |
| ⊗ | INSULATED TERMINAL |

| FABRIC SELECTOR SWITCH | |
|------------------------|--------------|
| FUNCTION | RESISTANCE Ω |
| HIGH | ∞ |
| MEDIUM | 2.4K ±5% |
| LOW | 10 MAX |

NOTES:
 1. ALL WIRING MUST CONFORM TO LOCAL ELECTRICAL CODES.
 2. CONNECT DRYER TO A 15 AMP INDIVIDUAL BRANCH CIRCUIT.
 3. SHOWN IN OFF POSITION, DOOR SWITCH CLOSED, MOTOR AT REST, THERMOSTAT CLOSED AND FABRIC SELECTOR SWITCH AT REGULAR.

1 ACCUMULATION

| | |
|-------------|-------|
| DRIVE MOTOR | _____ |
| HEATER | _____ |

G