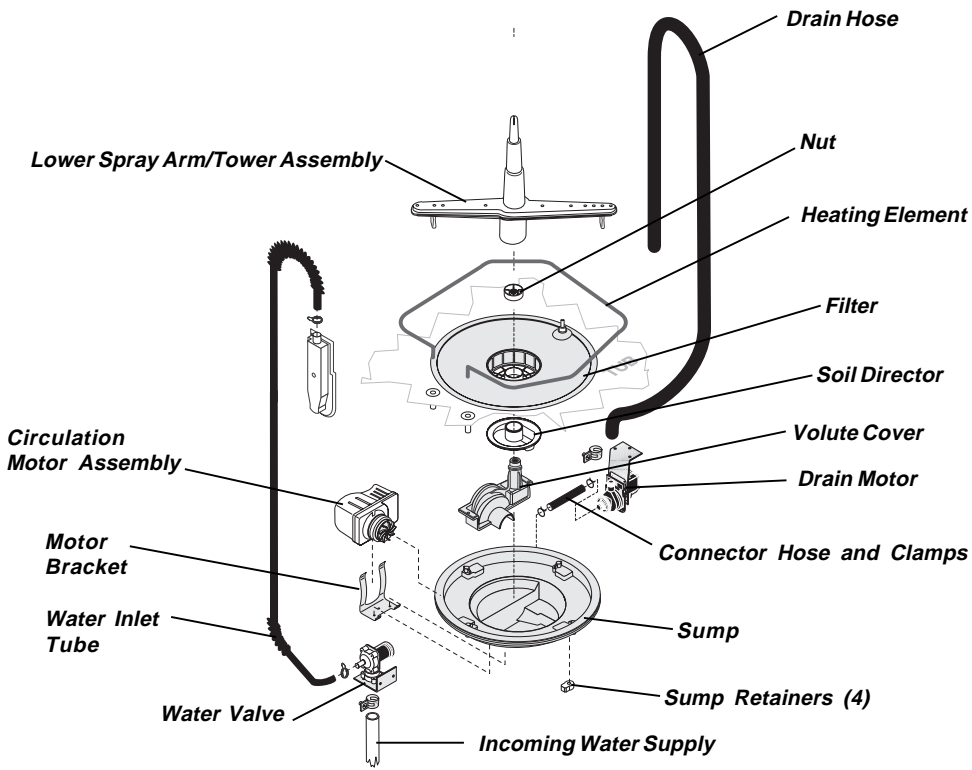


Exploded View of Wash System



Pump Assembly

The pump assembly is driven by a synchronous motor. Rotation is in the counterclockwise direction at 3600 RPM. The motor drives a pump which supplies 100 percent filtered water at a rate to approximately 12 GPM.

Draining is accomplished by using a small separate synchronous drain pump mounted to the side of the sump. The drain pump is connected to the main pump by a small rubber hose. The drain check valve is located at the entrance to the drain pump. The drain hose is attached by a worm gear clamp to the discharge of the drain pump.

The drain is then routed up the side of the dishwasher and attached to the side of the tub. This drain loop insures that an air pocket cannot form near the drain pump and cause the pump to air lock. The drain loop on the side of the tub must be kept in place after servicing.

The main pump can easily be removed by disconnecting the drain pump connector hose and the wiring harness connections made at the circulation motor and rotating the four sump retainers toward the middle of the sump.

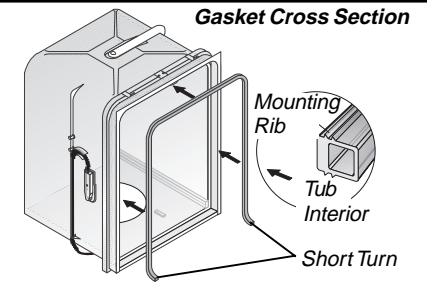
900 Watt Heater

Refer to the cycle chart on the reverse side to determine when the heater is on during the wash cycle.

Voltage checks of the heater should be made with the timer set in the main wash.

Tub and Door Seal

The door seal is pressed into the tub channel for an interference fit. Center the gasket (marked on back) at the tub top center and press in place without stretching or bunching. The gasket takes a short turn at the bottom of the tub channel before ending at the channel end wall.



Product Specifications

Electrical

Rating 120 Volts, 60Hz
 Separate Circuit 15 amp min.- 20 amp max.
 Motor (Amps) 1.1
 Heater Wattage 900
 Total Amps (load rated) 10.0

Water Supply

Minimum incoming water temperature
 120°F (49°C)
 Pressure (PSI) min./max. 20/120
 Connection (NPT) 3/8"
 Consumption (Normal Cycle)
 7.2 gal., 27.3 liters

Trouble Shooting Tips

⚠ WARNING



Electric Shock Hazard

Disconnect electrical power at the fuse box or circuit breaker box before adjusting or replacing components. Failure to follow this warning could result in death or serious injury.

Check the list below each symptom. Repair or replace defective components as encountered.

Symptom. . .Dishwasher will not operate when turned on (wait at least 90 seconds).

1. Fuse (blown or tripped).
2. 120 VAC supply wiring connection faulty.
3. Timer (contacts open or defective)
4. Motor (inoperative).
5. Door switch (open contacts).
6. Door latch not making contact with door switch.
7. Selector switch (open contacts).

Symptom. . .Motor hums but will not start or run.

1. Motor (bad bearings or locked rotor).
2. Motor stuck due to prolonged non-use.

Symptom. . .Motor trips out on internal thermal overload protector.

1. Improper voltage.
2. Seal faces binding.
3. Motor shaft binding.
4. Motor windings shorted.
5. Glass or foreign items in pump.

Symptom. . .Dishwasher runs but will not heat.

1. Heater element (open).
2. Timer defective.
3. Wiring or terminal defective.

Symptom. . .Dishwasher will not pump out.

1. Drain restricted.
2. Timer contact defective.
3. Defective drain pump.
4. Air lock in drain hose.
5. Make sure hose is attached in proper position on side of tub.
6. Blocked impeller.
7. Open windings.

Symptom. . .Dishwasher will not fill with water.

1. Water supply turned off.
2. Defective water inlet fill valve.
3. Check fill valve screen for obstructions.
4. Defective float switch.
5. Timer contact defective.
6. Wiring defective.
7. Float stuck in "UP" position.

Symptom. . .Timer does not advance.

1. Timer motor (stalled or open.)
2. Check timer for power to timer motor.
3. Timer shaft binding to or knob interference with escutcheon.

Symptom. . .Dishwasher water siphons out.

1. Drain hose (high) loop too low.
2. Drain line connected to a floor drain not vented. (Install air gap at counter top.)
3. Drain hose not connected to side of tub.

SERVICE DATA SHEET

P/N: 154397901

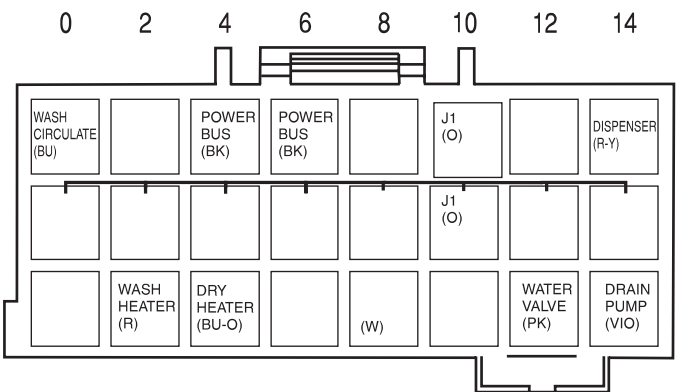
Model FDB101

This information is intended for use by persons having electrical and mechanical training and a level of knowledge of these subjects generally considered acceptable in the appliance repair trade. Electrolux Home Products North America cannot be responsible, nor assume any liability, for injury or damage of any kind arising from the use of this Service Data Sheet.

Color Code

BK..... Black
 BU..... Blue
 BU-O..... Blue/Orange
 O..... Orange
 PK..... Pink
 R..... Red
 VIO..... Violet
 W..... White
 R-Y..... Red/Yellow

Timer Block



Cycle Chart

	OFF	97	203	197	203	197	103	197	94	297	105	88	101	250	259	88	101	500	509	100	88	102	209	200	88	101	209	200	88	102	209	88	95		
BU 0T WASH MOTOR																																			
VIO 14B DRAIN MOTOR																																			
PK 12B FILL VALVE																																			
R 2B HEATER WASH																																			
BU-O 4B HEATER DRY																																			
R-Y 14T DISPENSER																																			
BK 6T PWR BUSS																																			
INTERVAL DURATION SECONDS																																			

Wiring Diagram

