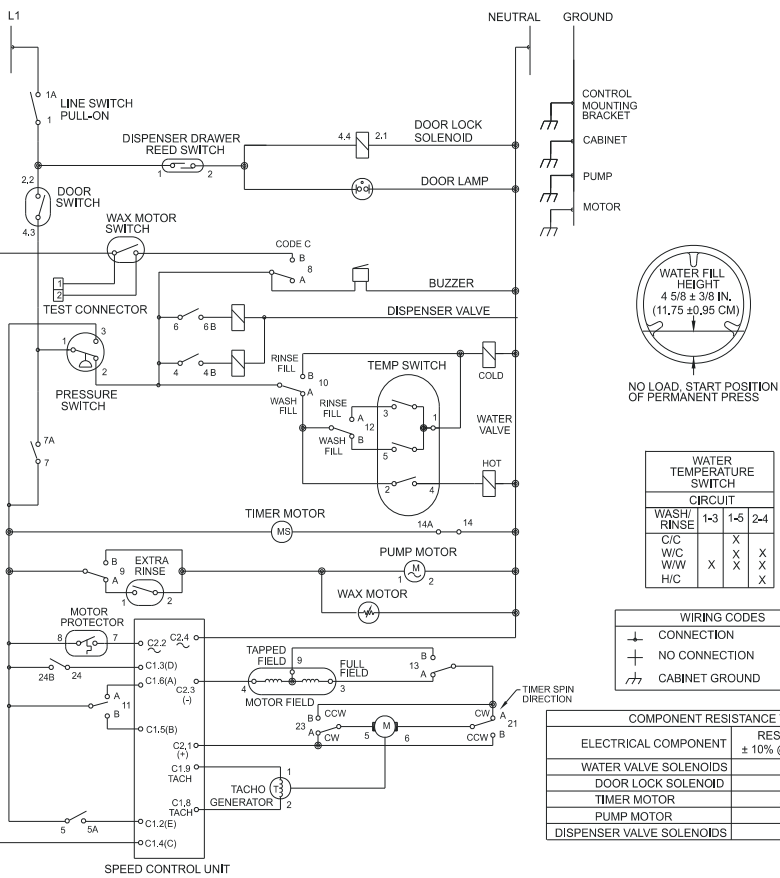
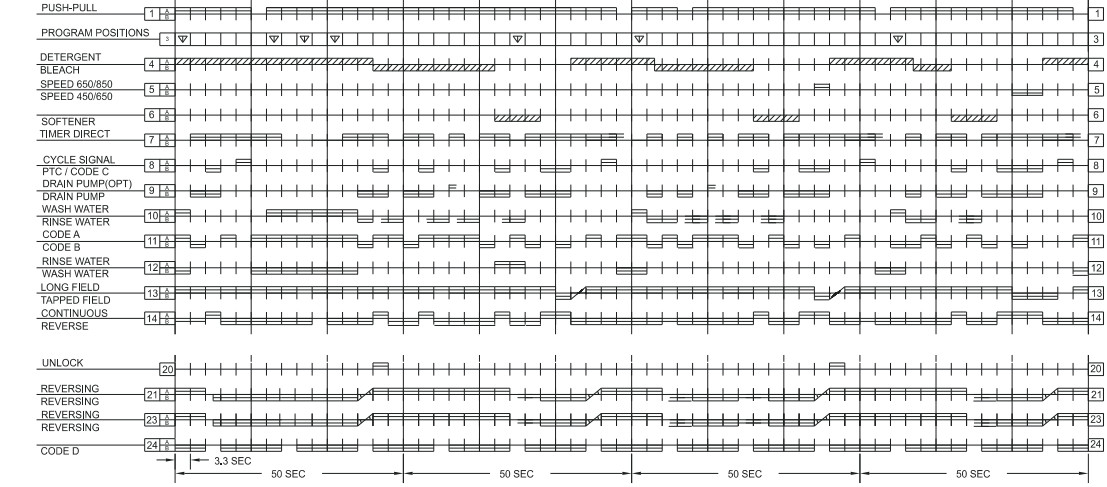
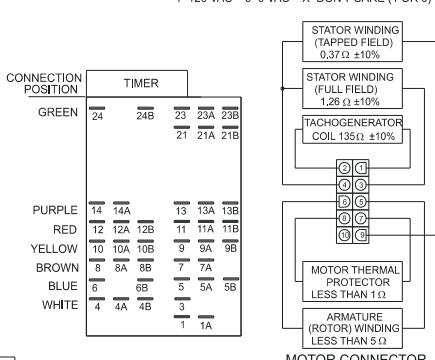




STEP	WATER TEMP. (°F)	WATER TEMP. (°C)	CYCLE PHASES		MOTOR MOVEMENT	PHASE DESCRIPTION
			WASH	PREWASH		
1	100	37	○	○	N	FILL THEN TUMBLE
2	100	37	○	○	N	DRAIN
3	100	37	○	○	S1	DRAIN AND SPIN
4	150	50	○	○	N	PAUSE AND COAST
5	150	50	○	○	N	PAUSE AND COAST
6	150	50	○	○	N	PAUSE AND COAST
7	150	50	○	○	N	PAUSE AND COAST
8	150	50	○	○	N	PAUSE AND COAST
9	150	50	○	○	N	PAUSE AND COAST
10	150	50	○	○	N	PAUSE AND COAST
11	150	50	○	○	N	PAUSE AND COAST
12	150	50	○	○	N	PAUSE AND COAST
13	150	50	○	○	N	PAUSE AND COAST
14	150	50	○	○	N	PAUSE AND COAST
15	150	50	○	○	N	PAUSE AND COAST
16	150	50	○	○	N	PAUSE AND COAST
17	150	50	○	○	N	PAUSE AND COAST
18	150	50	○	○	N	PAUSE AND COAST
19	150	50	○	○	N	PAUSE AND COAST
20	150	50	○	○	N	PAUSE AND COAST
21	150	50	○	○	N	PAUSE AND COAST
22	150	50	○	○	N	PAUSE AND COAST
23	150	50	○	○	N	PAUSE AND COAST
24	150	50	○	○	N	PAUSE AND COAST
25	150	50	○	○	N	PAUSE AND COAST
26	150	50	○	○	N	PAUSE AND COAST
27	150	50	○	○	N	PAUSE AND COAST
28	150	50	○	○	N	PAUSE AND COAST
29	150	50	○	○	N	PAUSE AND COAST
30	150	50	○	○	N	PAUSE AND COAST
31	150	50	○	○	N	PAUSE AND COAST
32	150	50	○	○	N	PAUSE AND COAST
33	150	50	○	○	N	PAUSE AND COAST
34	150	50	○	○	N	PAUSE AND COAST
35	150	50	○	○	N	PAUSE AND COAST
36	150	50	○	○	N	PAUSE AND COAST
37	150	50	○	○	N	PAUSE AND COAST
38	150	50	○	○	N	PAUSE AND COAST
39	150	50	○	○	N	PAUSE AND COAST
40	150	50	○	○	N	PAUSE AND COAST
41	150	50	○	○	N	PAUSE AND COAST
42	150	50	○	○	N	PAUSE AND COAST
43	150	50	○	○	N	PAUSE AND COAST
44	150	50	○	○	N	PAUSE AND COAST
45	150	50	○	○	N	PAUSE AND COAST
46	150	50	○	○	N	PAUSE AND COAST
47	150	50	○	○	N	PAUSE AND COAST
48	150	50	○	○	N	PAUSE AND COAST
49	150	50	○	○	N	PAUSE AND COAST
50	150	50	○	○	N	PAUSE AND COAST
51	150	50	○	○	N	PAUSE AND COAST
52	150	50	○	○	N	PAUSE AND COAST
53	150	50	○	○	N	PAUSE AND COAST
54	150	50	○	○	N	PAUSE AND COAST
55	150	50	○	○	N	PAUSE AND COAST
56	150	50	○	○	N	PAUSE AND COAST
57	150	50	○	○	N	PAUSE AND COAST
58	150	50	○	○	N	PAUSE AND COAST
59	150	50	○	○	N	PAUSE AND COAST
60	150	50	○	○	N	PAUSE AND COAST



DRUM RPM	PHASES DESCRIPTION	CODE	E	D	C	B	A
0	NO ACTION	/	X	0	0	0	0
0	NO ACTION	/	X	0	0	1	X
0	NO ACTION	/	X	0	0	1	1
0	NO ACTION	/	X	0	X	1	1
0	NO ACTION	/	X	0	X	1	1
52	AGIT - CONTINUOUS	N	X	1	0	0	1
52	AGIT - DUTY CYCLE	D	X	1	0	1	0
450	INTERVAL SPIN	S1+S1	X	X	1	0	1
450	SPIN - CONTINUOUS	S1	X	X	1	0	0
650	SPIN - CONTINUOUS	S2	1	X	1	1	0
850	SPIN - CONTINUOUS	S3	0	X	1	1	0



CONNECTION POSITION	TIMER	GREEN	PURPLE	RED	YELLOW	BROWN	BLUE	WHITE
24	24B	23	14A	12	10A	8	6	4
23A	23B	21	13A	11	9A	7	5	3
21B	21B	21A	11A	9A	7A	5A	3	1

ELECTRICAL COMPONENT	RESISTANCE Ω ± 10% @ 77°F(25°C)
WATER VALVE SOLENOIDS	880
DOOR LOCK SOLENOID	380
TIMER MOTOR	2070
PUMP MOTOR	4.6
DISPENSER VALVE SOLENOIDS	880

WARNING TO REDUCE THE RISK OF ELECTRICAL SHOCK DISCONNECT THIS APPLIANCE FROM THE POWER SUPPLY BEFORE ATTEMPTING ANY USER MAINTENANCE. TURNING THE CONTROLS TO THE OFF POSITION DOES NOT DISCONNECT THIS APPLIANCE FROM THE POWER SUPPLY.

WIRING DIAGRAM
P/N 131808300