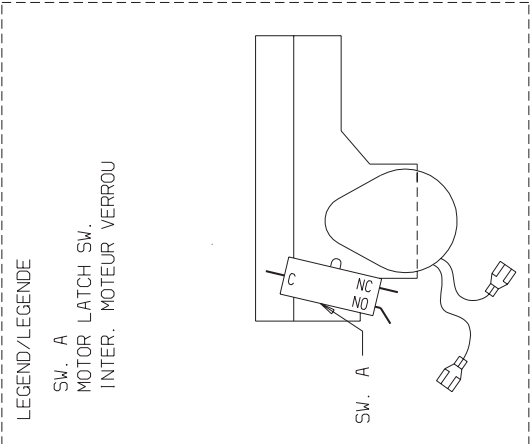
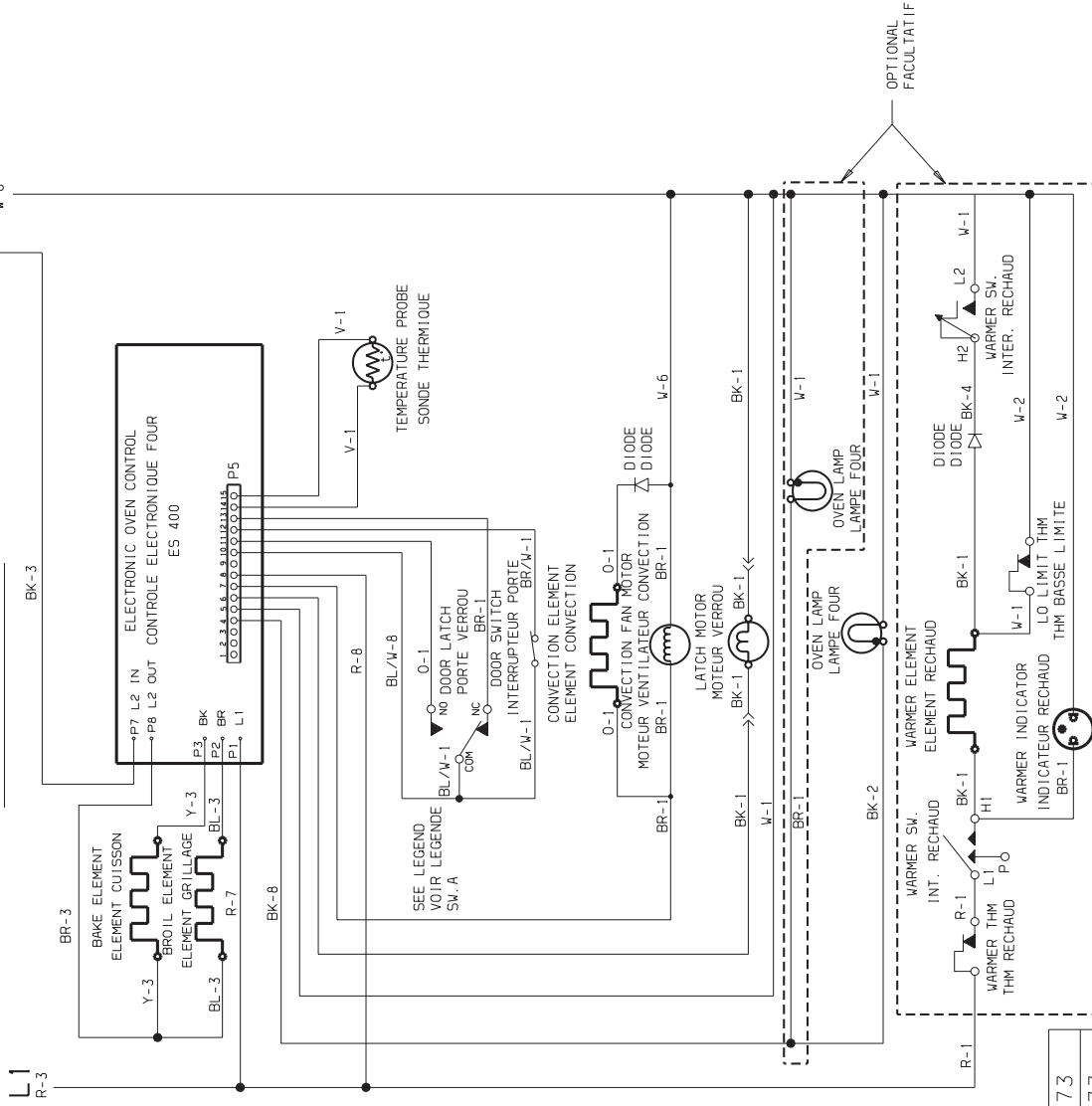


ELECTRIC // ELECTRIQUE

OVEN CIRCUIT CIRCUIT DU FOUR



SW. A
MOTOR LATCH SW.
INTER. MOTEUR VERRU

WARNING/AVERTISSEMENT
DISCONNECT POWER
BEFORE SERVICING UNIT.
COUPER LE COURANT AVANT
D'EFFECTUER LA REPARATION.

COLOR WIRE NO./NO. COULEUR FIL
W-2

COLOR CODE / CODE COULEUR	BR	BROWN/BRUN	
BK	BLACK/NOIR	BR	BROWN/BRUN
O	ORANGE/ORANGE	V	VIOLET/VIOLET
T	TAN/TAN	Y	YELLOW/JAUNE
C	COPPER/CUIVRE	GY	GRAY/GRIS
BL	BLUE/BLEU	G	GREEN/VERT
P	PINK/ROSE	R	RED/ROUGE
W	WHITE/BLANC	PR	PURPLE/POURPRE
BL/W	BLUE/WHITE STRIPE/BLEU/WHITE RAYE		

WIRE	GAGE	TEMP. °C	UL STYLE
8	18	125	3173
7	16	125	3173
6	14	150	3321
5	10	150	3321
4	18	200	3304
3	16	150	3321
2	18	200	3122
1	18	150	3321

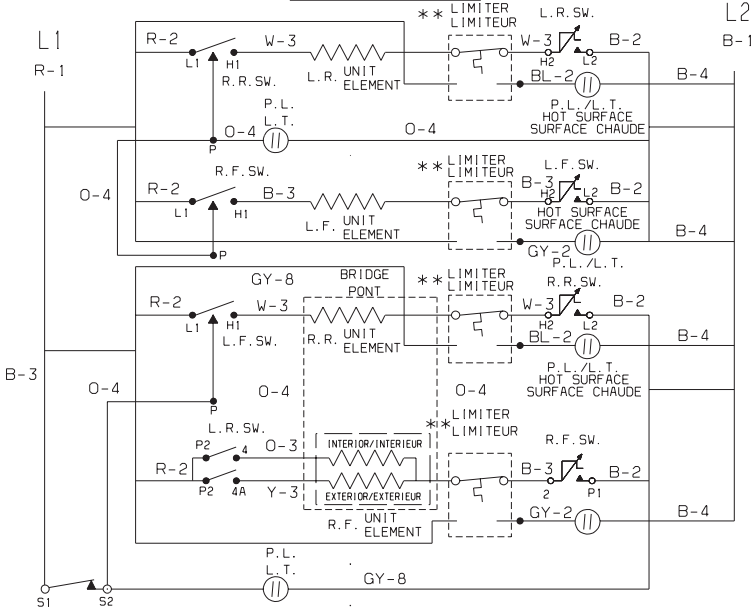
CAUTION:
LABEL ALL WIRES PRIOR TO DISCONNECTION WHEN SERVICING CONTROLS.
WIRING ERROR CAN CAUSE IMPROPER AND DANGEROUS OPERATION.
VERIFY PROPER OPERATION AFTER SERVICING.

AVERTISSEMENT:
ETIQUETER CHAQUE FIL AVANT LE DEBRANCHEMENT DE CEUX-CI. UNE ERREUR DE
BRANCHEMENT PEUT CAUSER UNE OPERATION DANGEREUSE. VERIFIER LE BON
FONCTIONNEMENT DE L'APPAREIL APRES TOUTE REPARATION.

SURFACE ELEMENTS CIRCUIT / CIRCUIT-ELEMENTS-SURFACE

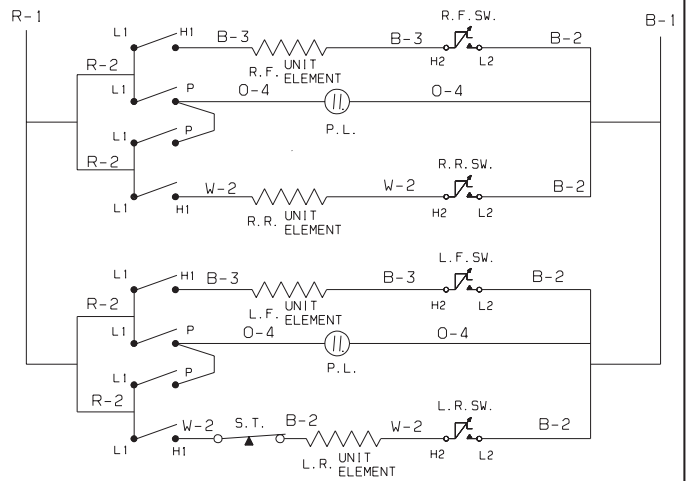
SMOOTH TOP WITH ONE BRIDGE ELEMENT AND 2 ELEMENTS / VITRIFIEE AVEC UN ELEMENT

PONT ET 2 ELEMENTS



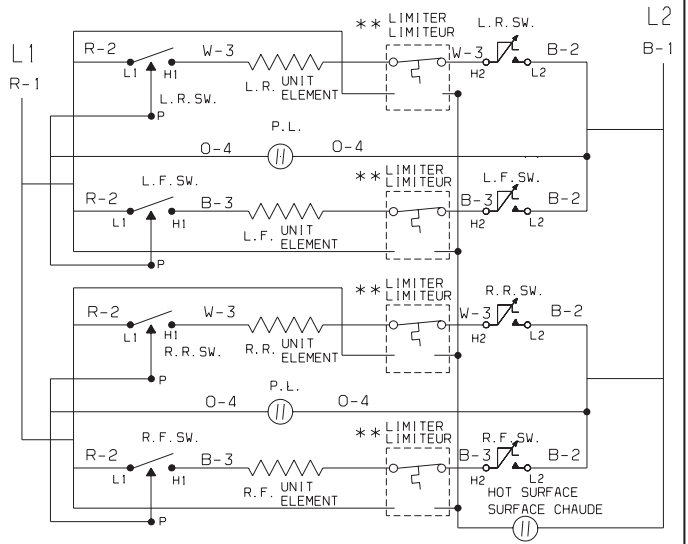
SURFACE ELEMENTS CIRCUIT / CIRCUIT-ELEMENTS SURFACE

COIL ELEMENTS / ELEMENTS SPIRALES



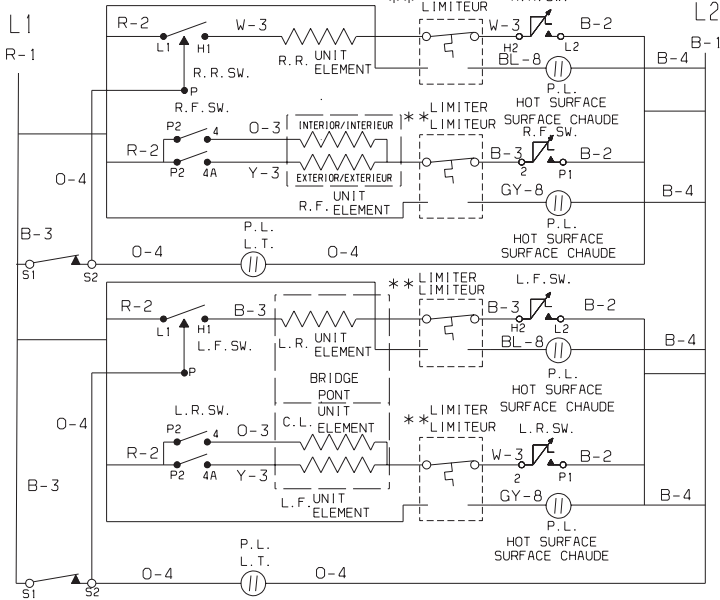
SURFACE ELEMENTS CIRCUIT / CIRCUIT-ELEMENTS-SURFACE

SMOOTH TOP / VITRIFIEE

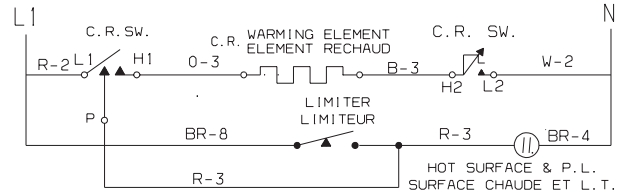


SURFACE ELEMENTS CIRCUIT / CIRCUIT-ELEMENTS-SURFACE

SMOOTH TOP WITH ONE BRIDGE ELEMENT AND DOUBLE ELEMENT / VITRIFIEE AVEC UN ELEMENT PONT ET UN ELEMENT DOUBLE

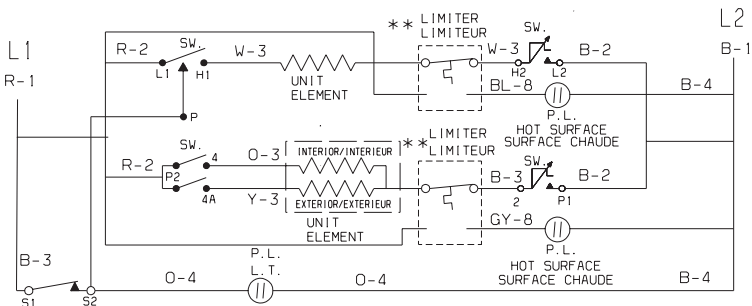


ELEMENTS WARMER ZONE CIRCUIT / CIRCUIT-ELEMENTS-ZONE RECHAUD

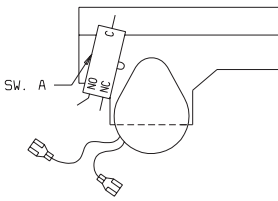


SURFACE ELEMENTS CIRCUIT / CIRCUIT-ELEMENTS-SURFACE

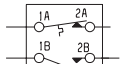
SMOOTH TOP WITH TWO DOUBLE ELEMENT (FRONT) / VITRIFIEE AVEC DEUX ELEMENTS DOUBLES (AVANT)



SW. A MOTOR LATCH SWITCH/ INTER. MOTEUR VERROU



** LIMITEUR/LIMITEUR CERAMASPEED/EIKA



** LIMITEUR/LIMITEUR E.G.O./A.K.O.



CAUTION:
ATTENTION:

DISCONNECT CURRENT BEFORE REMOVING REAR COVER.
COUPER LE COURANT AVANT D'ENLEVER LE PANNEAU ARRIERE.

REV: A