



# FRIGIDAIRE

## Factory Parts Catalog

Product No.	FGMO205KBC	FGMO205KFC	FGMO205KWC	FPMO209RFB
Market	North America	North America	North America	North America
Color	black	stainless steel	white	stainless steel
Volts	120	120	120	120
Watts	1200	1200	1200	1200
Wiring Diagram	5995678678	5995678678	5995678678	5995678678
Owner's Guide	TINSEB262WRRZ	TINSEB262WRRZ	TINSEB262WRRZ	TINSEB380WRRZ
Installation Instructions	316495084	316495084	316495084	316495084

### Frigidaire

P.O. BOX 8020  
CHARLOTTE, NC 28262

### BUILT-IN MICROWAVE

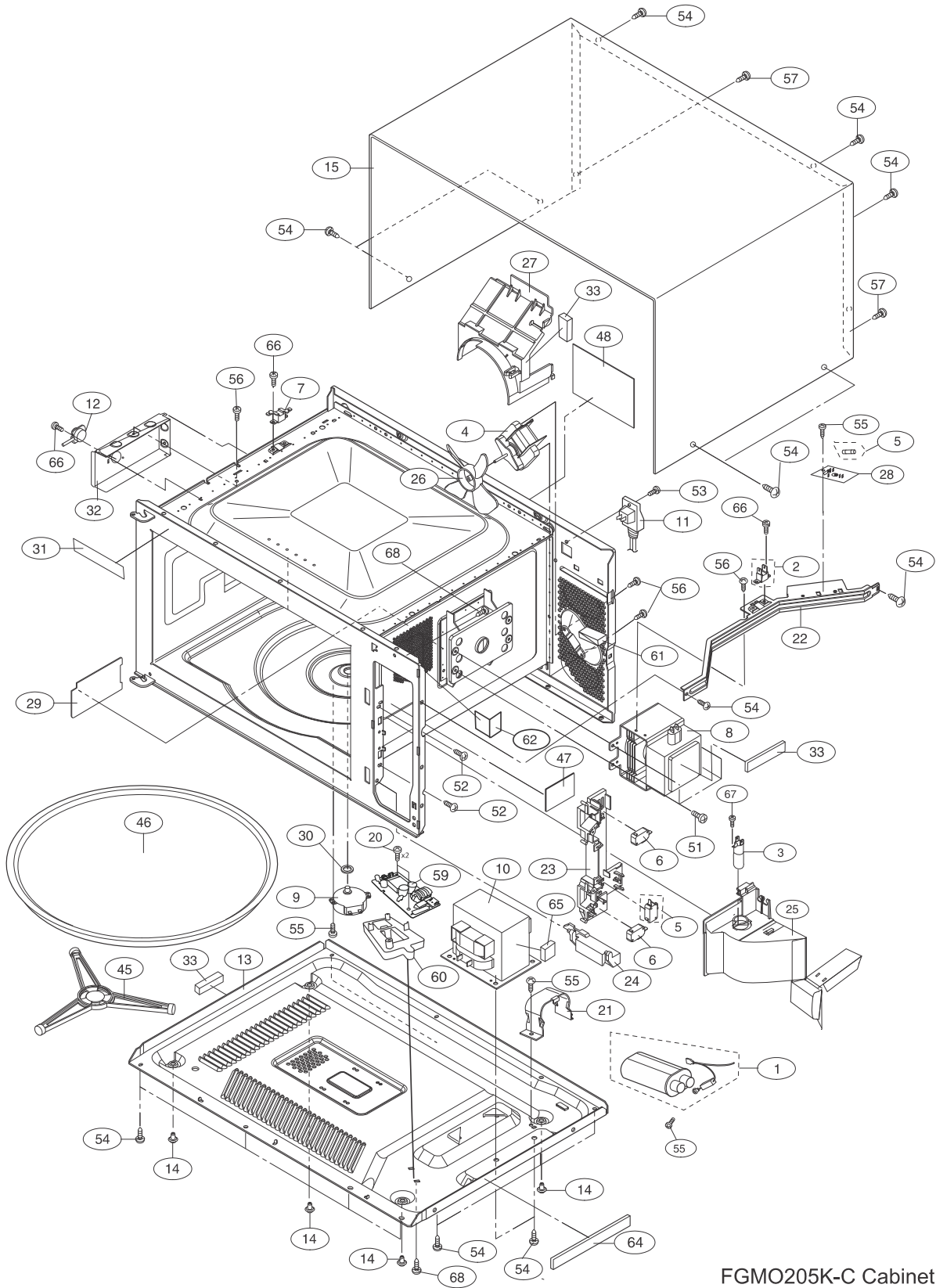
Model No.  
FGMO205K / FPMO209R

Publication No.

**5995678678**

16/08/23  
(EN/SERVICE/KC)  
099

OVEN, CABINET



FGMO205K-C Cabinet

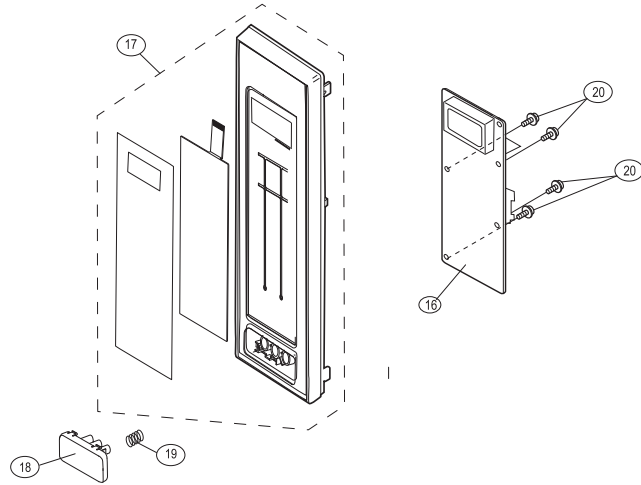
**OVEN,CABINET**

*Model Index:* A FGMO205K (FGMO205KBC)  
 B FGMO205K (FGMO205KFC)  
 C FGMO205K (FGMO205KWC)  
 D FPMO209R (FPMO209RFB)

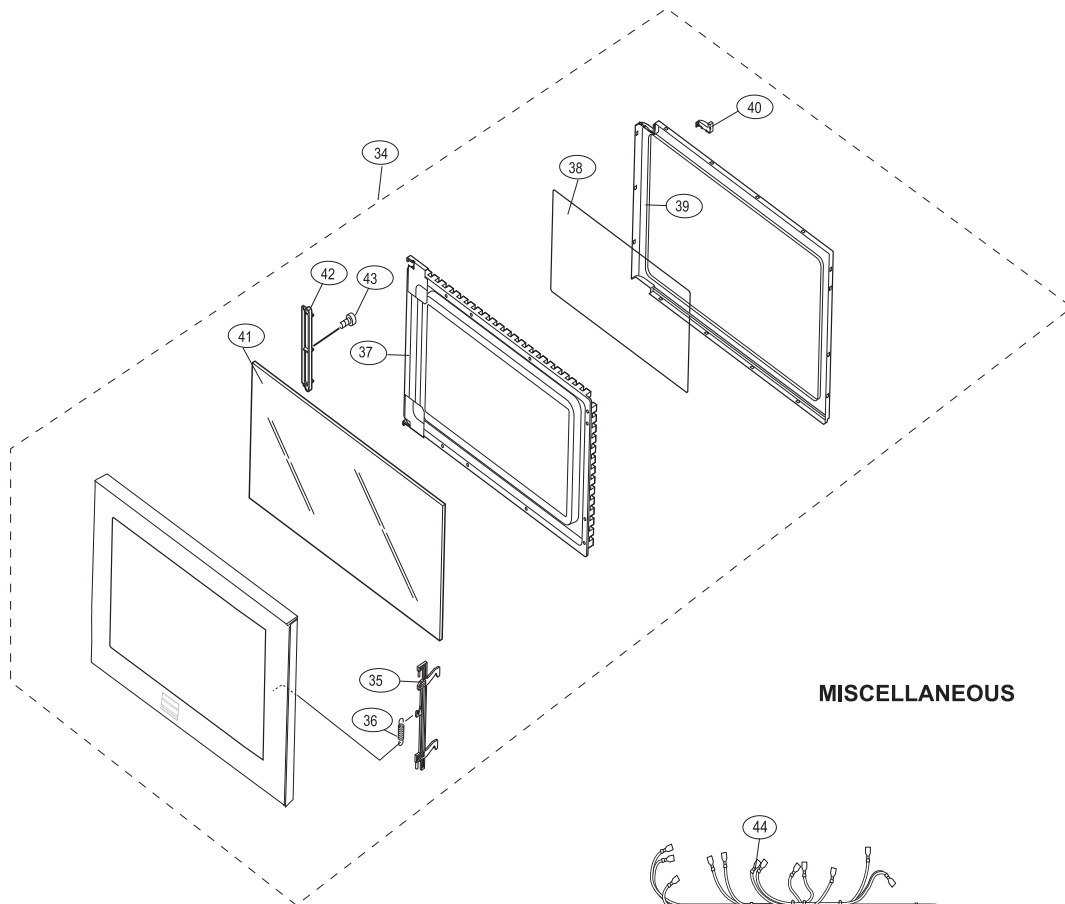
POS. NO	PART NO.		DESCRIPTION
1 #	5304479019	A B C D	Capacitor/Rectifier Kit, HV
2 #	5303319550	A B C D	Fuse, magnetron
3 #	5304440779	A B C D	Lamp Assy, with socket
4 #	5304493152	A B C D	Motor, cooling fan
5 #	5304479020	A B C D	Switch, monitor, w/ceramic fuse
6 #	5304493153	A B C D	Switch, interlock, door sensor
7 #	5304440780	A B C D	Fuse, cavity temp, 20 Amp, 250 V
8 #	5304440781	A B C D	Magnetron
9 #	5304440021	A B C D	Motor, turntable
10 #	5304479021	A B C D	Transformer, power
11 #	5304440784	A B C D	Power Cord, electric
12 #	5304440785	A B C D	Sensor, humidity, cook control
13	5304478938	A B C D	Base, unit chassis
14	5304478939	A B C D	Foot, cabinet support
15	5304478940	A B - D	Cabinet, outer casing, black
15	5304479022	- - C -	Cabinet, outer casing, white
20	5304456930	A B C D	Screw, 3 mm x 6 mm
21	5304478941	A B C D	Retainer, capacitor strap
22	5304478942	A B C D	Bracket, chassis support
23	5304503439	A B C D	Latch Hook
24	5304464899	A B C D	Lever, door release
25	5304478956	A B C D	Duct, magnetron
26 #	5304493155	A B C D	Fan Blade, cooling fan
27	5304493156	A B C D	Duct, cooling fan
28 #	5304507217	A B C D	Filter, noise, electronic
29	5304478947	A B C D	Cover, waveguide
30	5304467718	A B C D	Bushing, motor shaft, turntable
31	5304503484	A B C D	Label, menu
32	5304478948	A B C D	Duct, humidity sensor
33	5304478949	A B C D	Cushion, magnetron pad
45	5304467717	A B C D	Support Assy, turntable, roller
46	5304440868	A B C D	Tray, turntable, glass
47	5304467771	A B C D	Label, Caution-monitor
48	5304467770	A B C D	Label, Caution-DHHS
51	5304467780	A B C D	Screw, 4 mm x 8 mm, Tap Tight
52	5303319641	A B C D	Screw, (2)
53	5304462315	A B C D	Screw, 4 mm x 12 mm, ground
54	5304451552	A B C D	Screw, 4 mm x 8 mm, chromium
54	5304467777	A B - D	Screw, 4 mm x 8 mm, black
55	5304451550	A B C D	Screw, 4 mm x 8 mm
56	5304450253	A B C D	Screw, 4 mm x 8 mm
57	5304440873	A B C D	Screw, Torx, tamper proof
59 #	5304507220	A B C D	Power Unit, AC/DC switching
60	5304507222	A B C D	Holder, power unit
61	5304493208	A B C D	Cushion, fan motor
62	5304493209	A B C D	Cushion, cavity, control panel
64	5304493206	A B C D	Cushion, base plate
65	5304503485	A B C D	Cushion, transformer pad
66	5304467781	A B C D	Screw, 3 mm x 6 mm
67	5304474833	A B C D	Screw, 4 mm x 10 mm, white
68	5304505546	A B C D	Screw, 4mm x 10mm

**CONTROL PANEL, DOOR, MISC.**

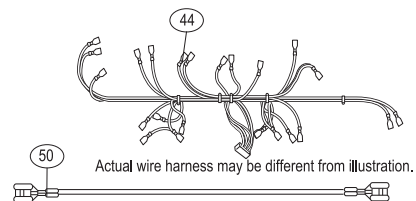
**CONTROL PANEL PARTS**



**DOOR PARTS**



**MISCELLANEOUS**



FGMO205K\_A Control

**CONTROL PANEL,DOOR,MISC.**

*Model Index:* A FGMO205K (FGMO205KBC)  
 B FGMO205K (FGMO205KFC)  
 C FGMO205K (FGMO205KWC)  
 D FPMO209R (FPMO209RFB)

POS. NO	PART NO.		DESCRIPTION
16 #	5304507215	A B C -	Control Board, printed circuit
16 #	5304507213	- - - D	Control Board, printed circuit
17 #	5304472843	A - - -	Control Panel Assy, black
17 #	5304472842	- B - -	Control Panel Assy, stainless/black
17 #	5304472844	- - C -	Control Panel Assy, white
17 #	5304503438	- - - D	Control Panel Assy, w/touch pad
18	5304440827	A - - -	Push Button, door, black
18	5304462915	- B - D	Push Button, door, stainless
18	5304442133	- - C -	Push Button, door, white
19	5304440831	A B C D	Spring, door button
20	5304456930	A B C D	Screw, 3 mm x 6 mm
34	5304472850	A - - -	Door Assy, complete, black
34	5304472849	- B - -	Door Assy, complete, stainless/black
34	5304472851	- - C -	Door Assy, complete, white
34	5304503440	- - - D	Door Assy, complete, stainless
35	5304441893	A B C D	Latch, door
36	5304440316	A B C D	Spring, door latch
37	5304440857	A B - D	Panel, inner door, black
37	5304442144	- - C -	Panel, inner door, white
38	5304440860	A B C D	Seal, door, film
39	5304440861	A B C D	Choke Cover, inner door
40	5304442145	A B C D	Door Stop
41	5304472854	A B - -	Panel, door glass, black
41	5304472855	- - C -	Panel, door glass, white
41	5304503441	- - - D	Panel, door glass, black
42	5304440862	A B C D	Stop, door glass
43	5304452259	A B C D	Screw
44 #	5304507218	A B C D	Wiring Harness, main
50 #	5304503442	A B C D	Wire, high voltage-A

**WIRING DIAGRAM**

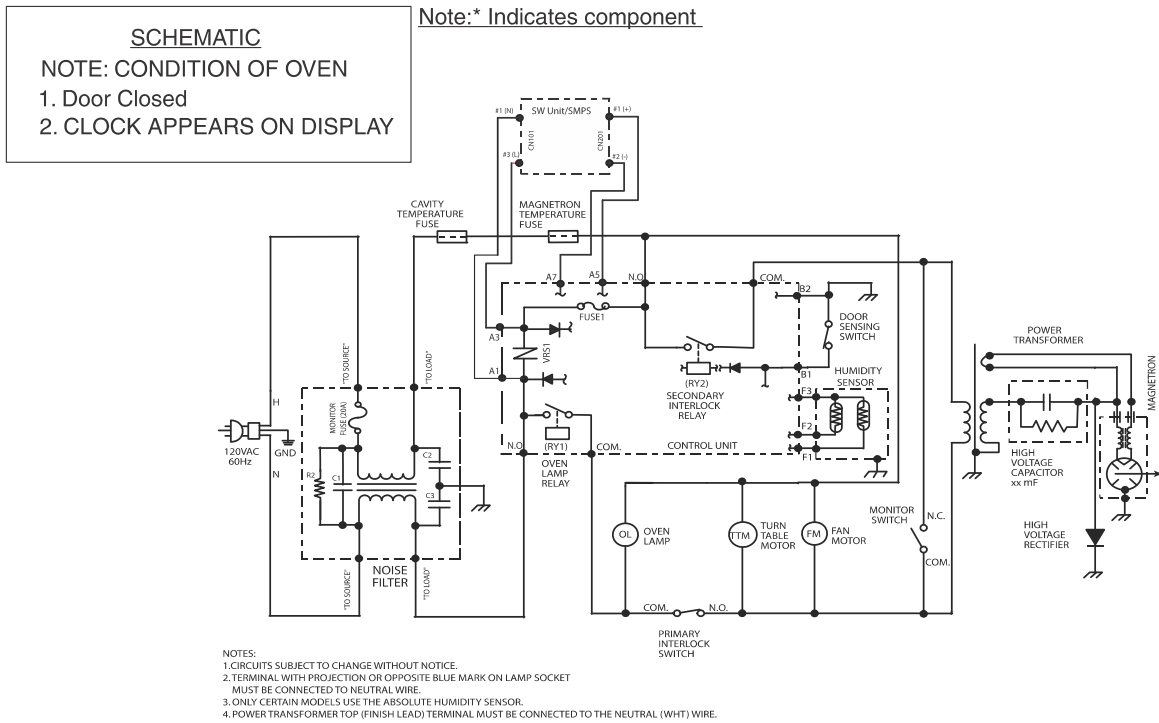


Figure O-1 Oven Schematic - Off Condition (FPMO209\_205KFCY)

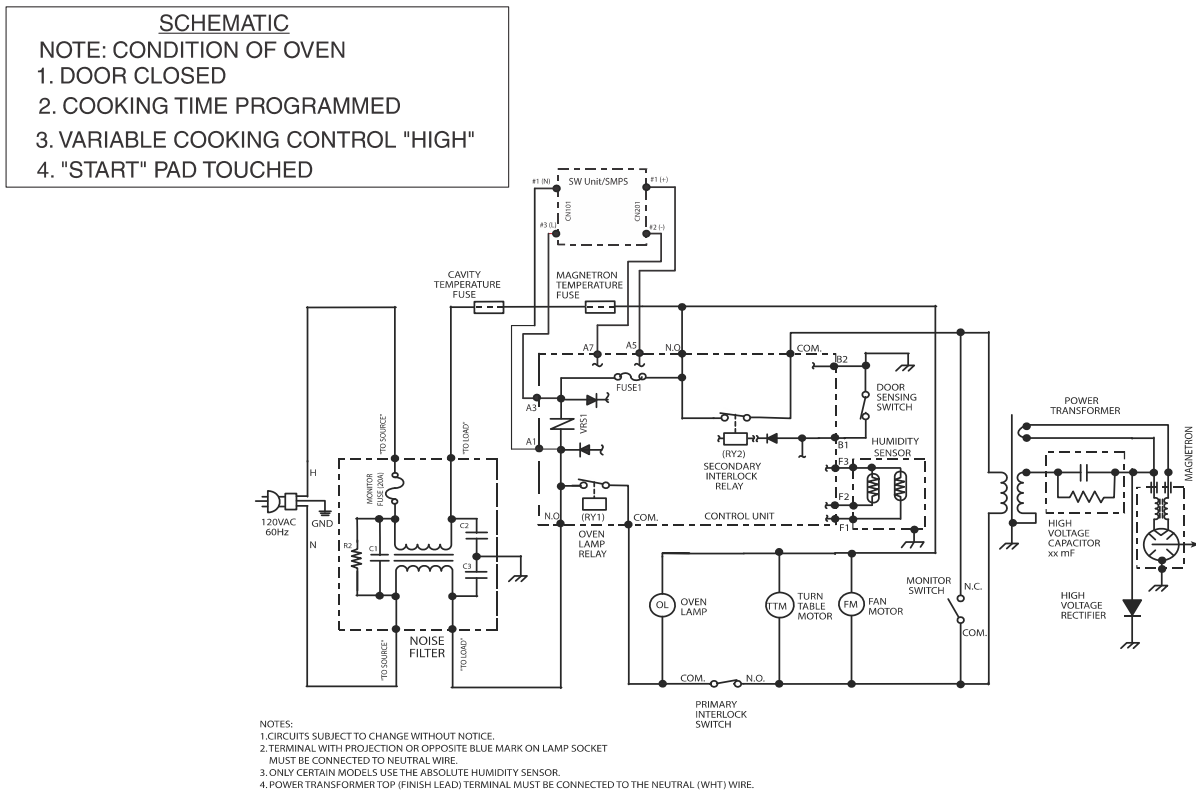


Figure O-2 Oven Schematic - Cooking Condition (FPMO209\_205KFCY)